



Together Recovery is Real and Possible

Laura Garcia, Director

Illinois Department of Human Services Division of
Substance Use Prevention and Recovery
(IDHS/SUPR)

“Recovery is a journey of healing and growth during which people choose many pathways. For some, abstinence is a critical pathway while others choose different approaches.”



Paolo del Vecchio, MSW,
Director, SAMHSA Office of Recovery



IDHS/SUPR's Mission

- The mission of the Division of Substance Use Prevention and Recovery is to provide a recovery-oriented system of care along the continuum of prevention, intervention, treatment and recovery support where individuals with SUD (and/or Gambling Disorder), those in recovery and those at risk are valued and treated with dignity and where stigma, accompanying attitudes, discrimination, and other barriers to recovery are eliminated.



Recovery Oriented Systems of Care (ROSC) Makes It More Likely That...



People avoid or delay the use of drugs, but if they use...



People may not experience harmful consequences or develop a harmful relationship with drugs, but if they do...



People are more willing to acknowledge their harmful relationship with drugs and ask for help, and when they do...



People have access and support regardless of their income level, insurance status, race, ethnicity, gender identity, sexual orientation, or citizenship status, and when they do...



Programs effectively support multiple pathways to recovery, and when they do...

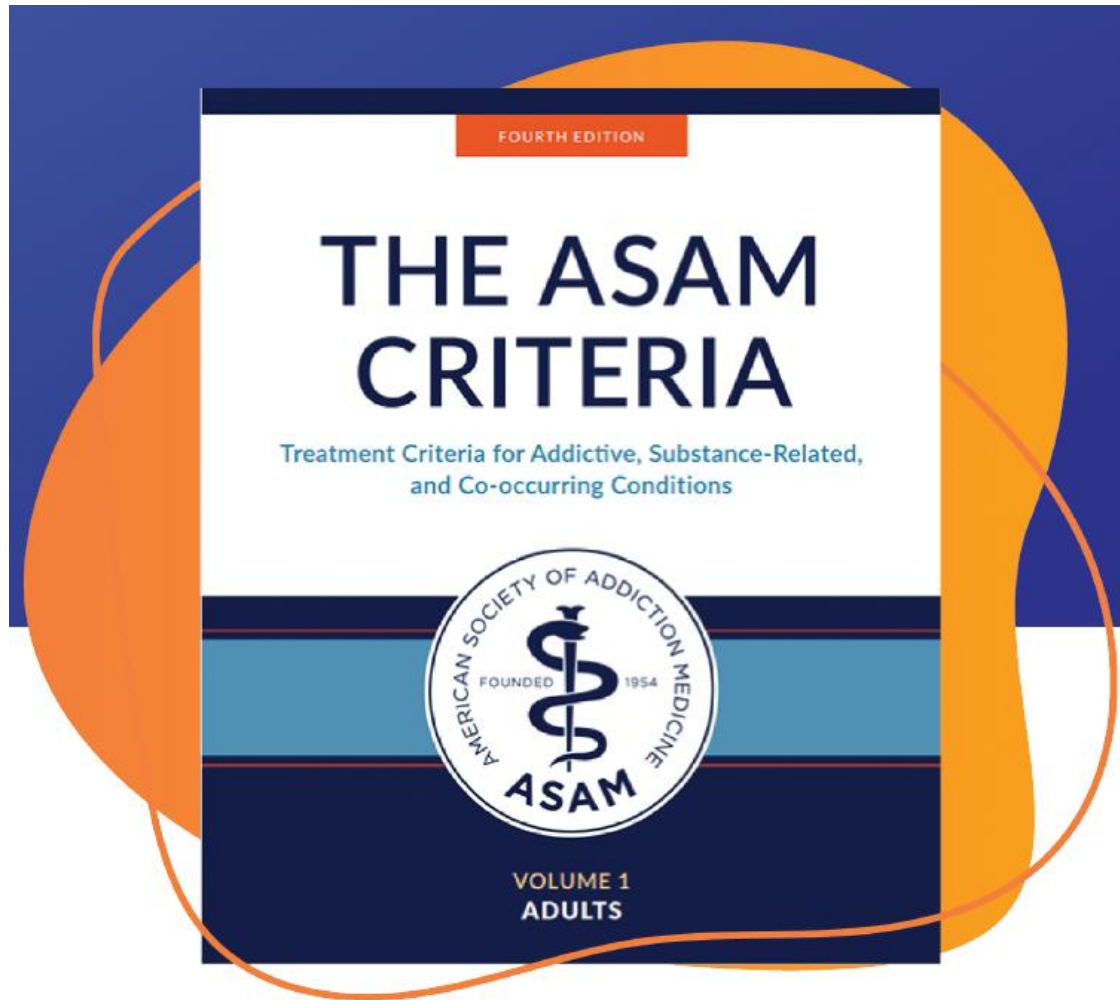


Supports is available in the community to help people preserve the positive changes they make as part of their recovery.





How are we increasing Access to Recovery?



ASAM 4th Edition

- SUPR:
 - Shipped every organization licensed to provide treatment the ASAM Criteria, 4th Edition book and an ASAM implementation guide.
 - Offers free 2-day ASAM training sessions for licensed organizations.



Identifies **Harm Reduction** as a component of individualized care



ASAM now requires the review and treatment planning for the **Social Determinants Of Health**



Identifies **Culturally Humble Care** as a process of entering a relationship with a person with the intention of honoring their beliefs, customs and values



Recognizes the importance of **Trauma-Sensitive Practices (TSP)**.



Recommends the availability of **Recovery Support Services** in all levels of care.

Access Narcan

- The Access Narcan project provides community-based organizations, hospitals, law enforcement, and other organizations access, at no cost, to naloxone, the lifesaving medication that restores breathing during an opioid overdose.
- Illinois has surpassed the research-based state saturation level of 160,000 kits.
- From January 1, 2024, through June 30, 2024, 206,988 kits of Narcan were ordered and shipped through Access Narcan.
- Most insurers, including Medicaid, now offer Narcan with a \$0 co-pay and it is widely available over the counter.



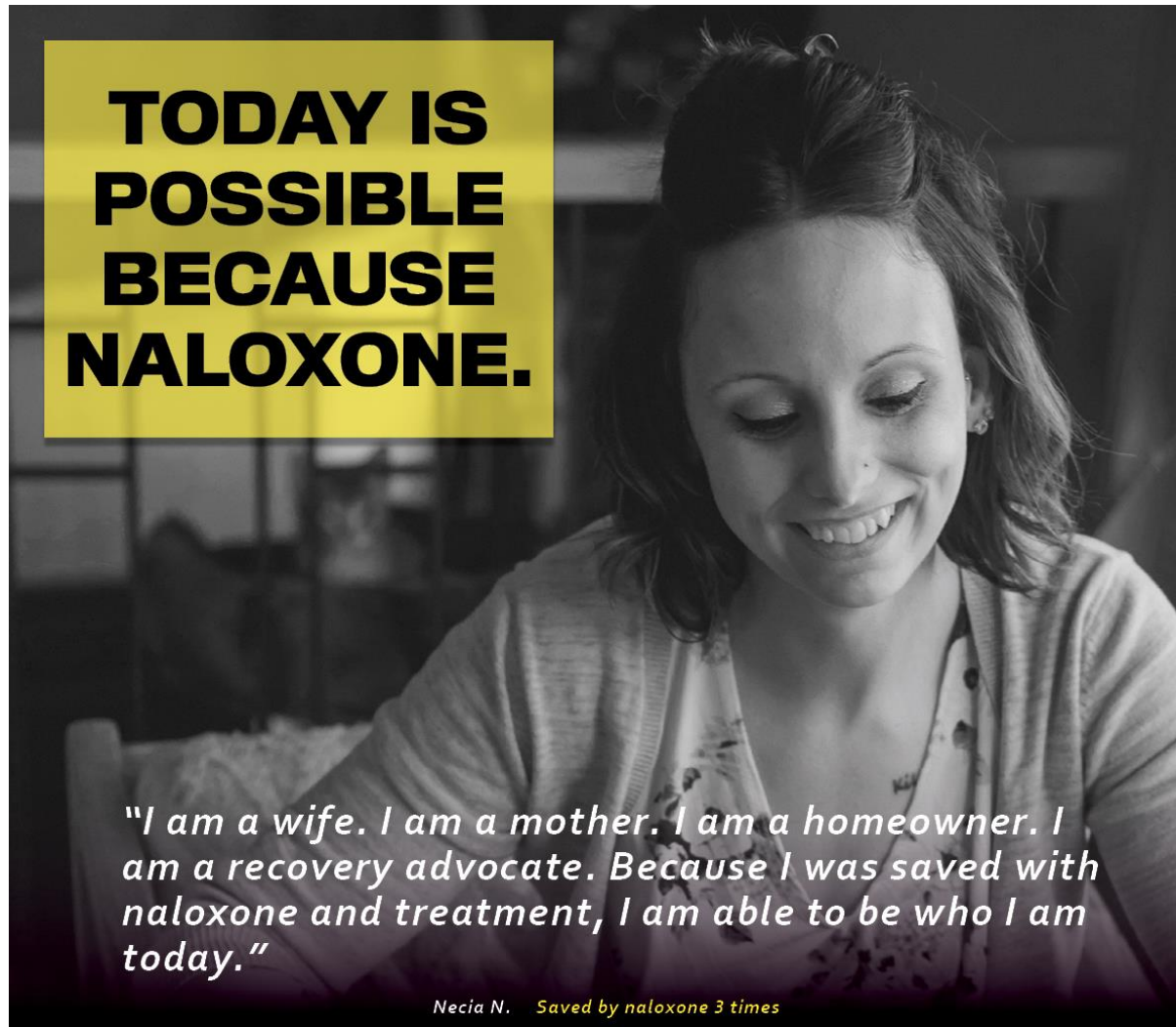
[This Photo](#) by Unknown Author is licensed under [CC BY-SA-NC](#)



IDHS/SUPR Drug Overdose Prevention Program

Enroll here: <https://www.dhs.state.il.us/page.aspx?item=58142>

Access free Narcan (naloxone) supplies



(Photo: [Prevention First](#), 2020)

MAR NOW provides low-barrier access to medications to treat substance use disorders within 48 hours of first call to the Illinois Helpline

Individual calls 24/7 IL Helpline for OUD treatment, withdrawal support

IL Helpline directly transfers caller to MAR NOW Care Manager

24/7 Access
Connected to Care Manager & Provider

Patient Options

1. Buprenorphine home induction
2. Same or next-day MAR appointment at FGC
3. Connection to SUD care in the community

Care Managers provide **free transportation**, insurance enrollment, assistance with pharmacy access, and follow up to ensure patient is connected to long-term care



Hub and spoke model to ensures connection to ongoing community care

MAR NOW works closely with pharmacies to ensure that they have medications available and are able to assist patients

Pharmacies

Mental health providers

Harm reduction providers

Mental health, primary care, and harm reduction services are key referral points to and from MAR NOW

Primary care providers

All patients connected to outpatient MAR for long-term treatment in the community

Community MAR providers

Cook County Jail

Program is working closely with jail and homeless shelter providers to offer linkage to MAR NOW

Homeless shelters and encampment outreach

MAR NOW

Patients that leave treatment can come back to MAR NOW and be connected again to treatment in the community. MAR NOW can also serve as a bridge clinic for patients waiting for care.



Call, Text, or Visit the Illinois Helpline



When you're ready for recovery, we're here for you.

Call **833-2FINDHELP**
(833-234-6343)

Text **HELP** to **833234**

Visit **HelplineIL.org**



Help is here.

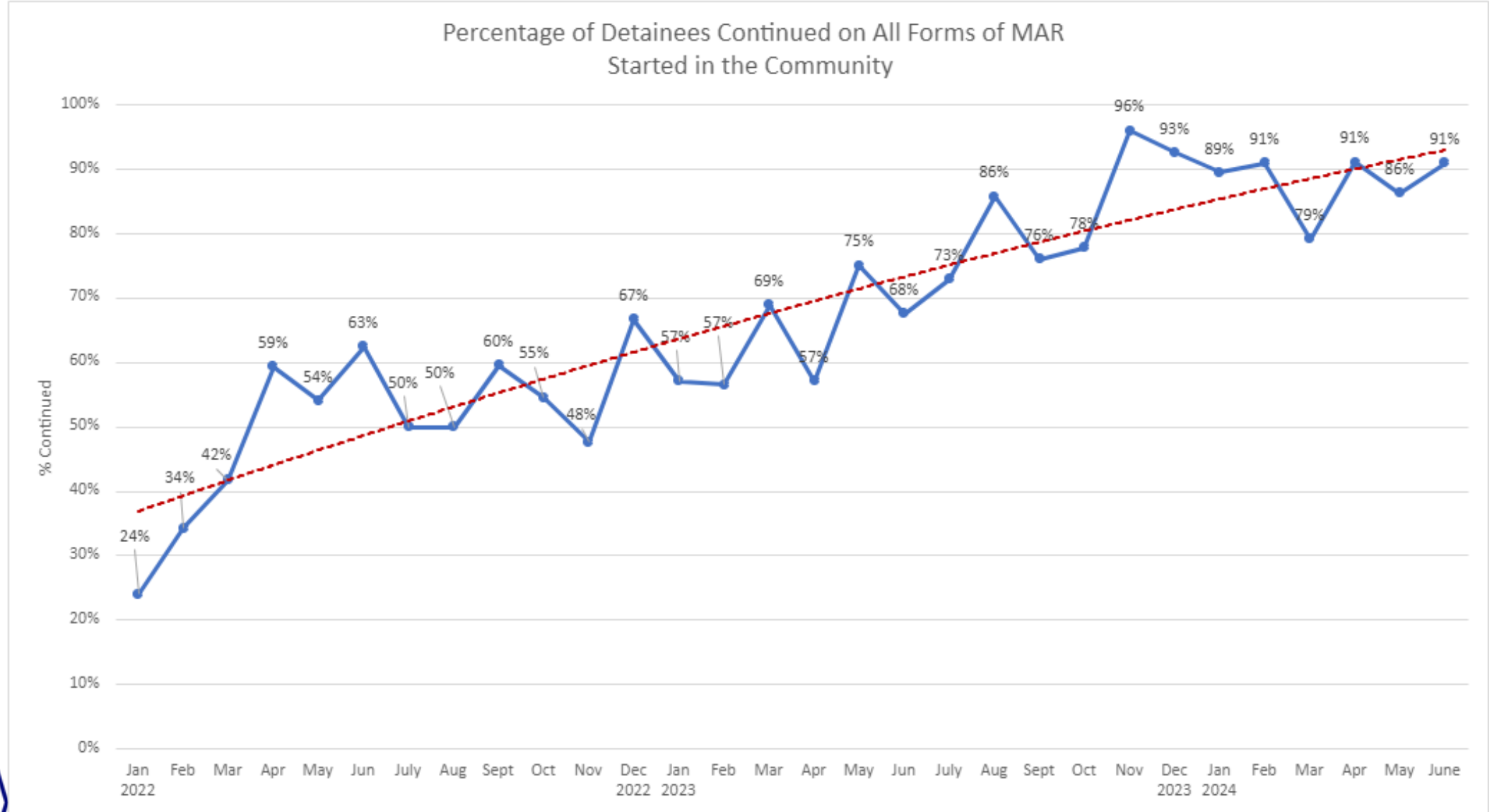
833-2FINDHELP
HelplineIL.org



- 26 counties are participating in the MAR in County Jails Learning Collaborative (73% have expanded or initiated MAR treatment since joining the Learning Collaborative).
- The total number of detainees receiving MAR ranges from 85-102 per month.
- 77-91% of detainees have continued MAR, which was initiated in the community.
- As of March 2024, 967 total-unique detainees have received MAR in a jail that is part of the County Jails Learning Collaborative.



Increases in MAR Continuation



MAR in County Jails Learning Collaborative

Active counties represent:

57.0%

of the state population

Active and inactive counties represent **64.1%** of the state population.

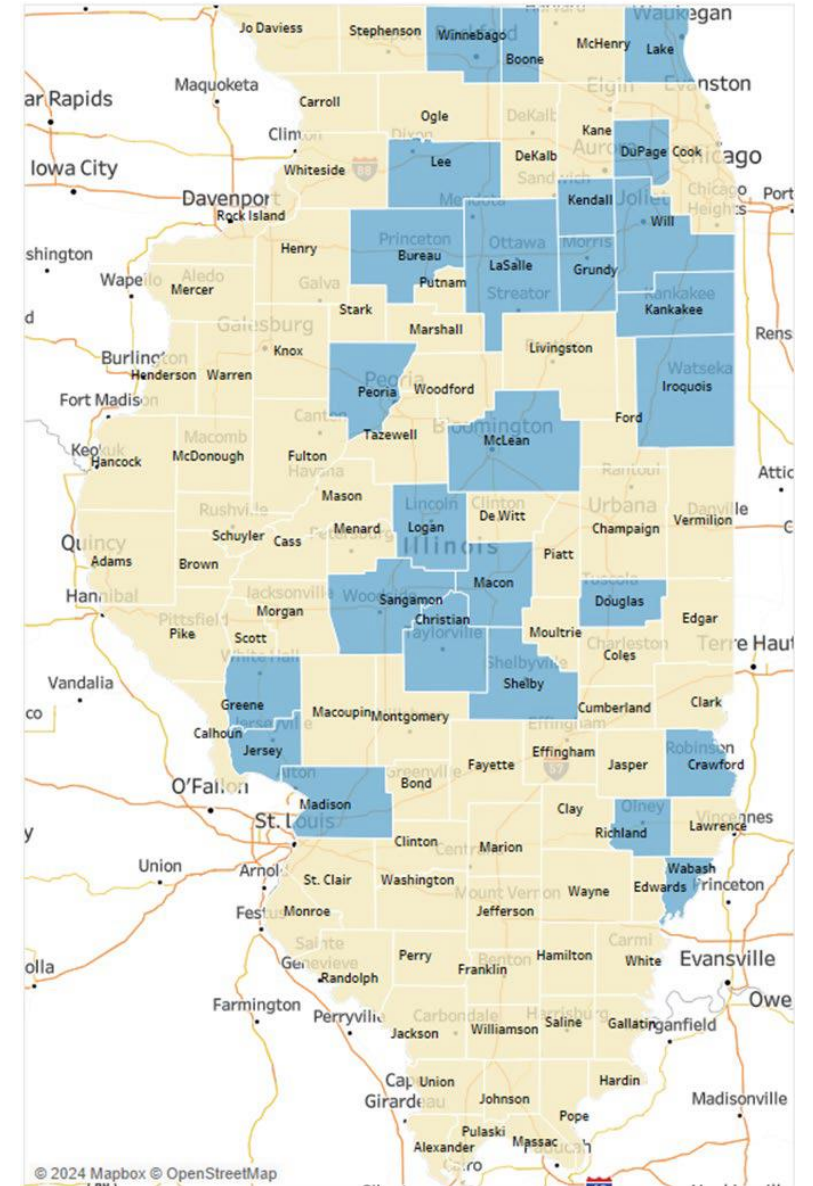
(Percentages exclude Cook County)



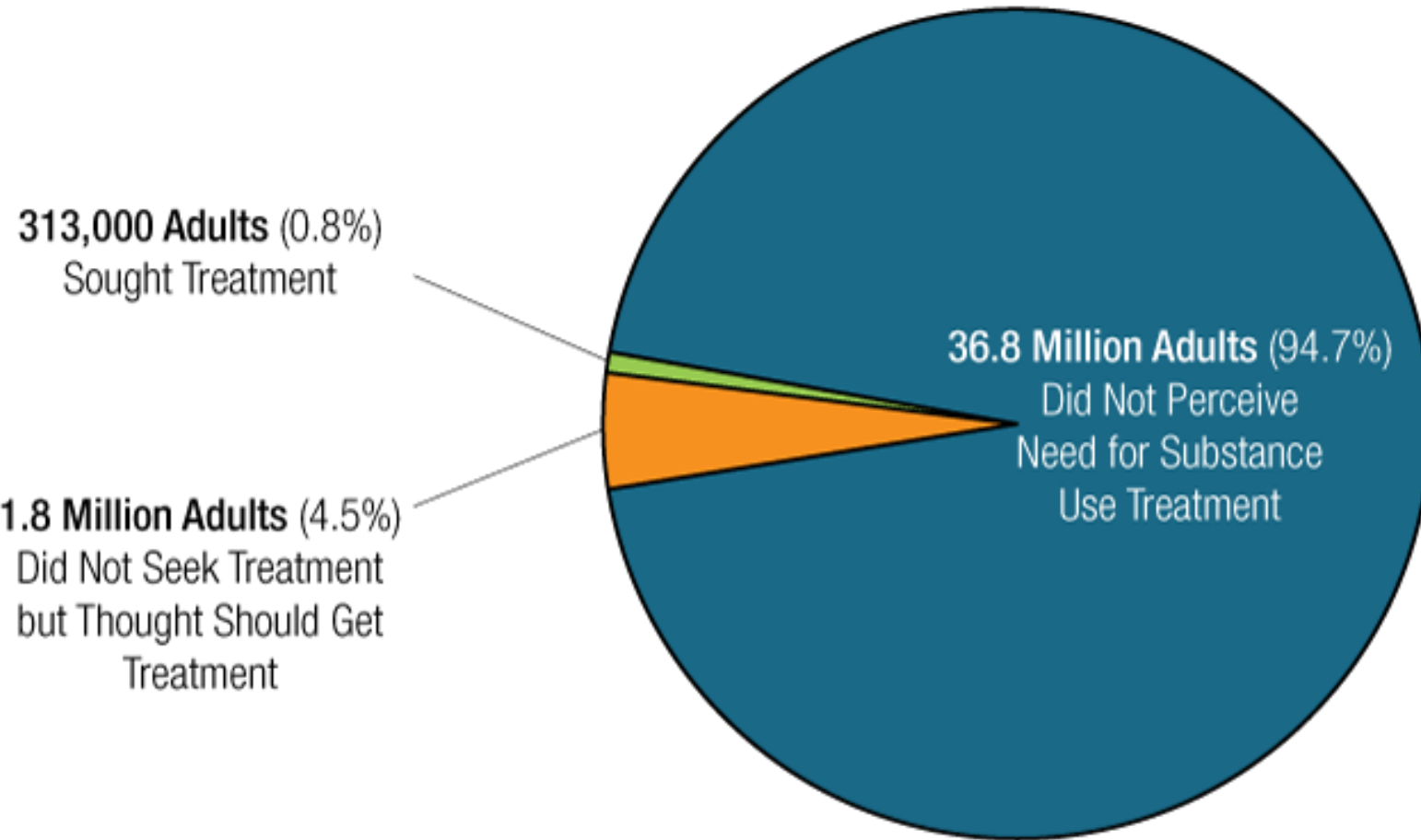
26

Active Counties:

- | | |
|-----------|-----------|
| Boone | Logan |
| Bureau | Macon |
| Christian | Madison |
| Crawford | McLean |
| Douglas | Peoria |
| DuPage | Richland |
| Greene | Sangamon |
| Grundy | Shelby |
| Iroquois | Wabash |
| Jersey | Will |
| Kankakee | Winnebago |
| Kendall | |
| Lake | |
| Lasalle | |
| Lee | |



Unique Challenges



39.7 Million Adults with a Substance Use Disorder Who Did Not Receive Substance Use Treatment

**Help
is here**



Why People Don't Go to Treatment

Among adults with a substance use disorder who did not get treatment in the past year:

- 78% think they should be able to handle their alcohol or drug use on their own
- 61% not ready to start treatment
- 53% not ready to stop or cut back on using alcohol or drugs
- 46% worried about what people would think or say if they got treatment
- 42% not having health insurance coverage for alcohol or drug use treatment

(SAMHSA, 2023)



SUPR Recovery Programs

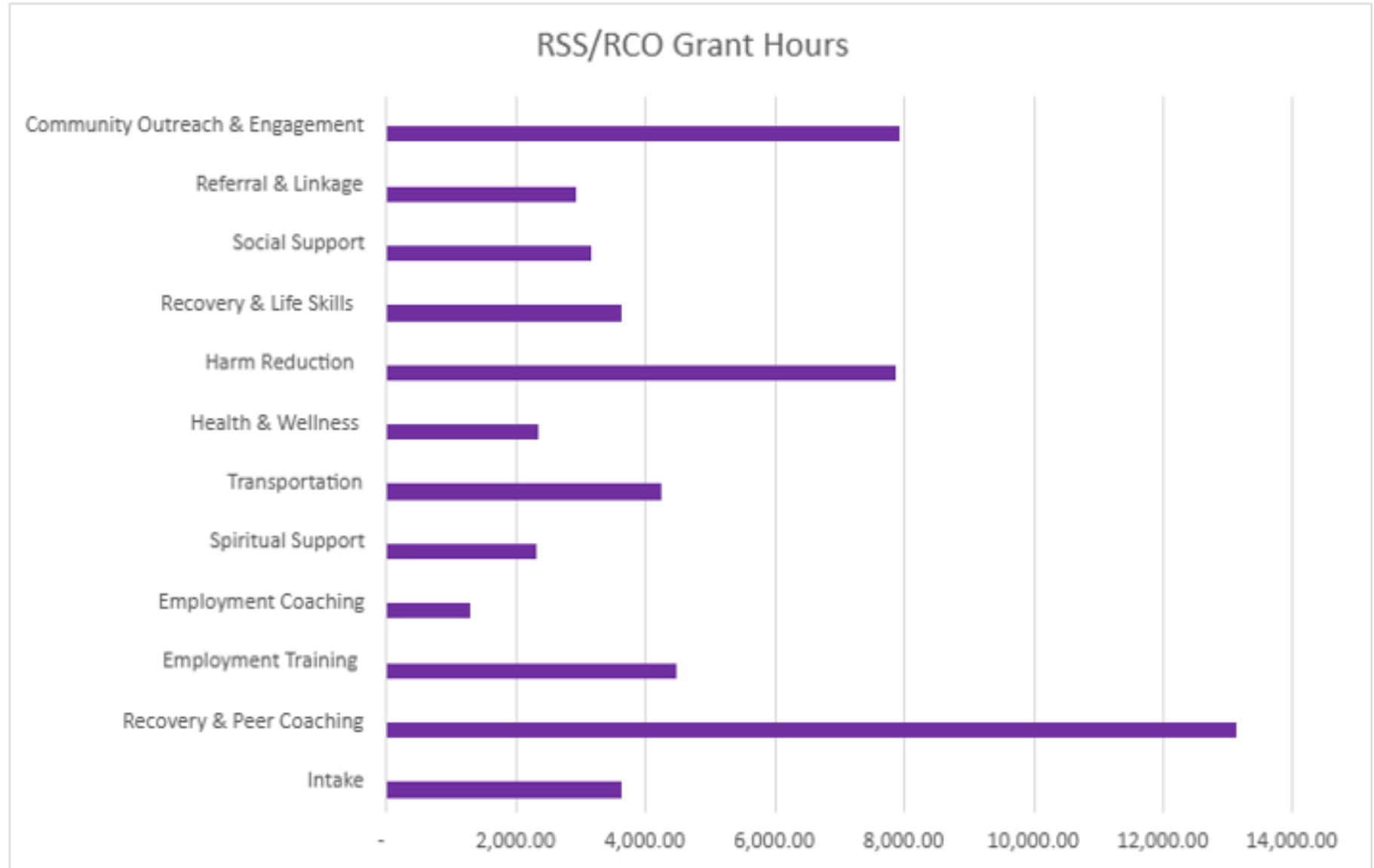
- Recovery Support Services (RSS)
 - Non-clinical services offered in treatment programs and community-based organizations that are typically provided by peers to support individuals in their own self-directed journey of recovery.
- Recovery Community Organizations (RCO) –
 - 30 RCO/RSS grantees covering 53 counties
 - Non-profit organizations delivering RSS which are led and governed by representatives of local communities of recovery.
- Recovery-Oriented Systems of Care (ROSC) Councils – 43 councils covering 57 counties
 - Coalitions of community-based stakeholders that engage individuals, families, and communities to promote recovery and improved health, wellness, and quality of life for those with or at risk of substance use and/or co-occurring conditions.



A Snapshot of Recovery Support Services in Illinois

Grant-Funded RSS Service Hours (January – June 2024)

- Over 3,000 unique individuals served per month
- 57,000+ total staff hours of RSS provided
- Over 50% of staff hours spent doing recovery & peer coaching, harm reduction, or community outreach.



Peer-Run Recovery Residences

- Oxford House Inc. first partnered with IDHS/SUPR in FY22 starting with a total of 58 houses in 19 counties across the state.
- Oxford House Inc. embraces a wrap-around approach to recovery, by emphasizing community involvement with local leaders, neighbors, and town-based initiatives.
- Within just two years, they opened their **100th Oxford House in Illinois** and provide over 850 beds to people in recovery.



Licensed Recovery Homes

- Recovery Homes – 97 across the state with 1,938 total beds
- Recovery Homes are licensed under Part 2060 to provide housing for residents in recovery from a substance use disorder.
- Surveying all Recovery Home providers in Fall 2024 to gain a better understanding of their day-to-day operations and technical assistance needs.



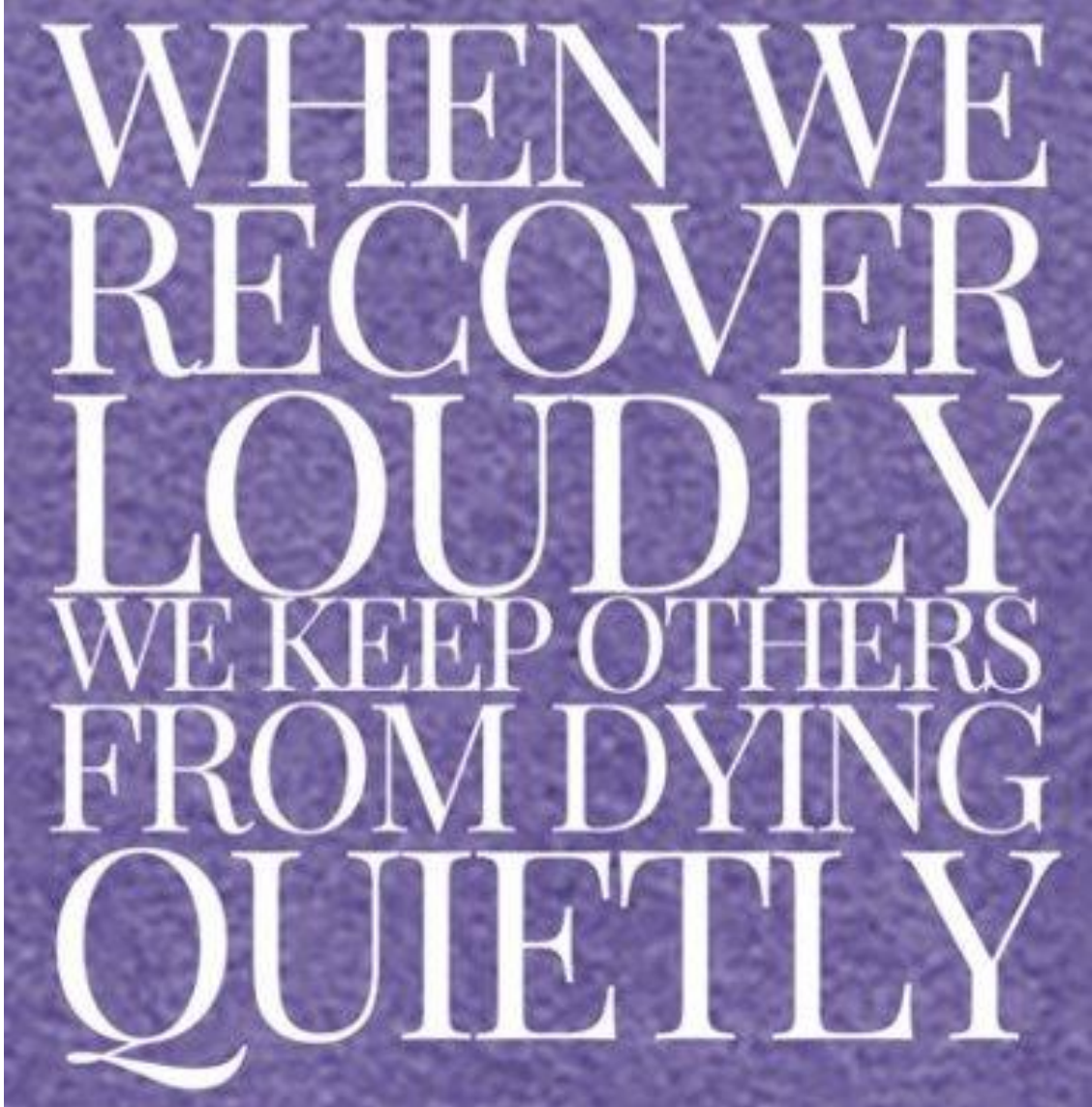
Permanent Supportive Housing

- Funded by Cannabis Regulation & Tax Act
- Provides Permanent Supportive Housing to over 300 households with a history of homelessness and a substance use disorder or co-occurring disorder.
- Priority populations include youth (18-25), women, and families with children
- Operates using a Housing First Model
- Participants receive case management that promotes housing stability and recovery, including naloxone, MAR, and peer support.

Help
is here

Recovery Month 2024

Create
Awareness



WHEN WE
RECOVER
LOUDLY
WE KEEP OTHERS
FROM DYING
QUIETLY



Prudential Plaza



Merchandise Mart

Light up the Chicago Skyline!

#RecoveryBelongsIL

#ILApoyaRecuperacion



Wearing Purple for Recovery Month

IDHS/SUPR Executive Staff



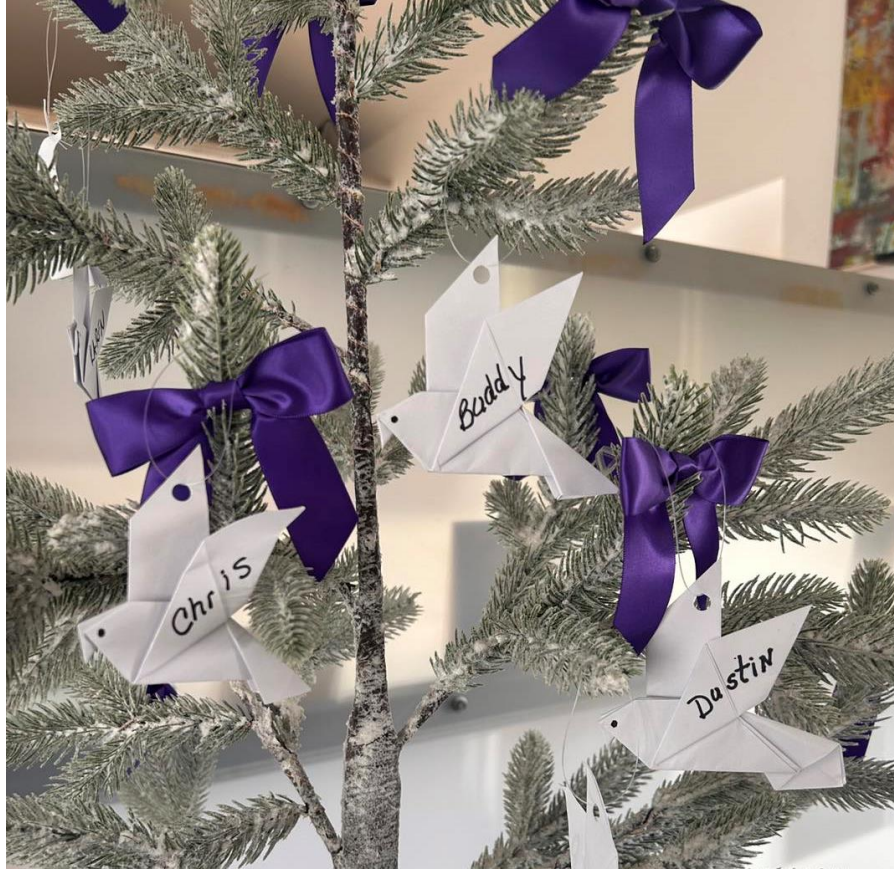
Recovery Month Events: SVVOR RCO and ROSC

Ogle/Dekalb/Lee/Whiteside



Perfectly
Flawed
Foundation
RCO

LaSalle, Bureau, Putnam,
Marshall, Henry, Lee



Live4Lali RCO

Winnebago, Boone,
Kane, Lake, Suburban
Cook, McHenry, DuPage



National Recovery Rally 2024

IDHS SUPR and DMH





Thank You!



Illinois
Helpline